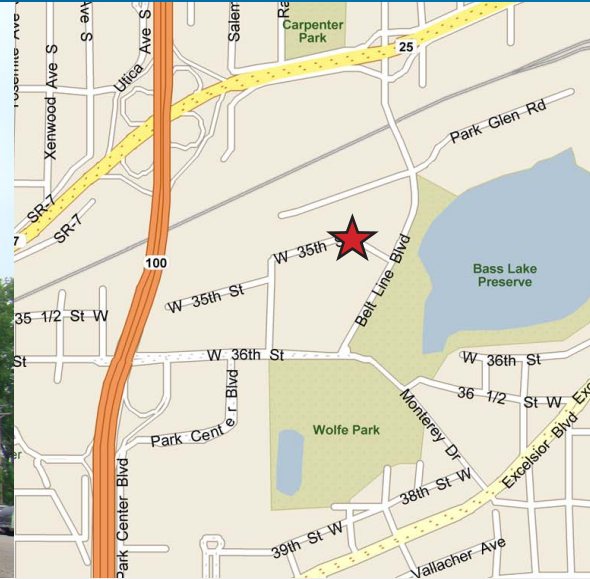


FOR LEASE > OFFICE SPACE



Beltline Park Office Building

4915 35TH STREET WEST, ST LOUIS PARK, MINNESOTA



Office Space for Lease

This building provides an outstanding west suburban location that has convenient access to Hwy 7, Hwy 100 and I-394.

Building Amenities

- > Great value office space
- > Located in the heart of St. Louis Park
- > Excellent access to Minneapolis, Hwy 7, Hwy 100 and I-394
- > Neighborhood office building with a great glass line and efficient layout
- > Good parking

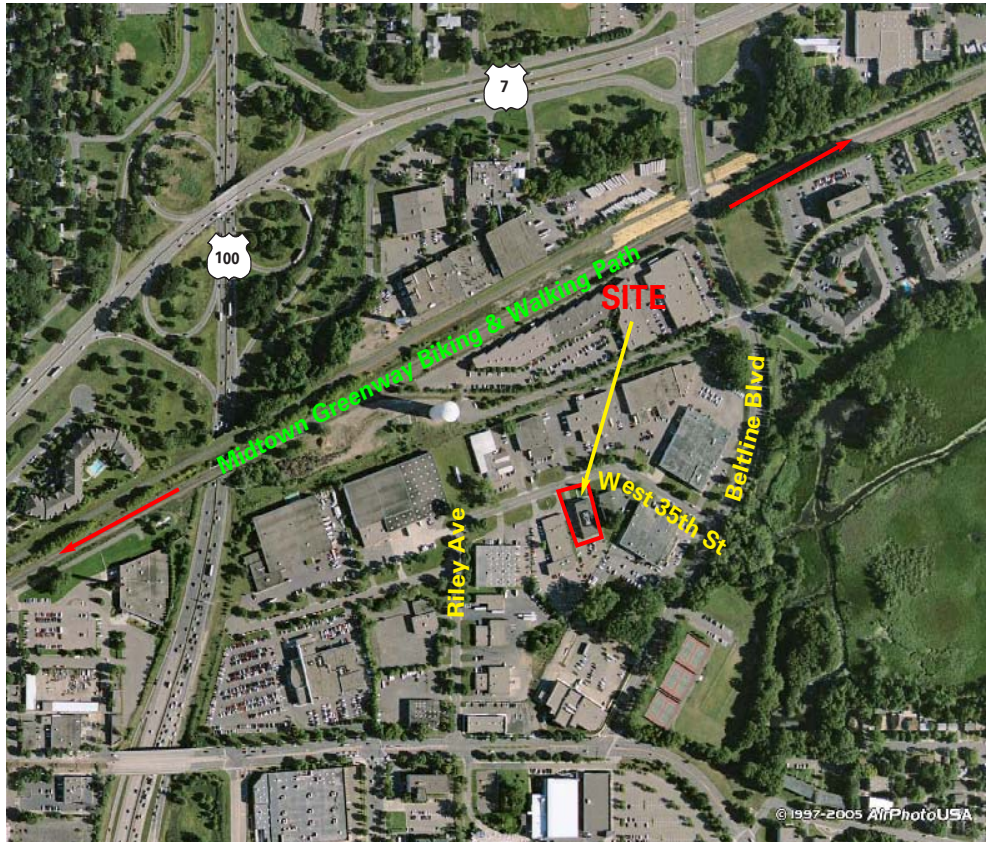
Contact Us

CHAD ANVARY
952 897 7719
MINNEAPOLIS, MN
chad.anvary@colliers.com

MATT ELDER
952 374 5848
MINNEAPOLIS, MN
matt.elder@colliers.com

COLLIERS INTERNATIONAL
4350 Baker Road, Suite 400
Minnetonka, MN 55343
www.colliers.com

Beltline Park Office Building > Aerial



Contact Us

CHAD ANVARY
952 897 7719
MINNEAPOLIS, MN
chad.anvary@colliers.com

MATT ELDER
952 374 5848
MINNEAPOLIS, MN
matt.elder@colliers.com

COLLIERS INTERNATIONAL
4350 Baker Road, Suite 400
Minnetonka, MN 55343
www.colliers.com



PROPERTY FACT SHEET



Beltline Park Office Building

4915 35TH STREET WEST, ST LOUIS PARK, MINNESOTA

PROPERTY ADDRESS:

4915 35th Street West
St. Louis Park, Minnesota

CURRENTLY AVAILABLE:

Suite 103:

1,045 square feet of office end cap
\$1,200 per month gross rent
• 2 months free rent with 3 year deal

Suite 107:

840 square feet of office
\$950 per month gross rent
• 2 months free rent with 3 year deal

AMENITIES:

- Janitorial included
- On-site management
- Located in the heart of St. Louis Park
- Excellent access to Minneapolis, Hwy 7, Hwy 100 & I-394
- Neighborhood office building with a great glass line and updated finishes
- Good parking
- Both DSL and cable internet service available in the building



For Information, Contact:

CHAD ANVARY
952 897 7719
chad.anvary@colliers.com

MATT ELDER
952 374 5848
matt.elder@colliers.com

COLLIERS INTERNATIONAL
4350 Baker Road, Suite 400
Minnetonka, MN 55343
www.colliers.com

SUITE 107: 840 Square Feet

