



# Palms of Pasadena Medical Plaza

1615 Pasadena Ave. South St. Petersburg, FL 33707

## Key Features/Highlights

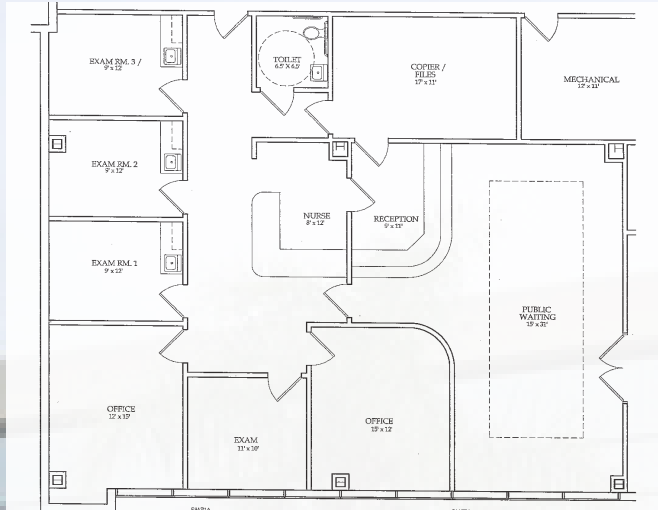
- › Class B, four-story, 45,548 RSF medical office building with upscale lobby, lush landscaping, cafe, on-site property management and information/security desk
- › Adjacent to Palms of Pasadena Hospital
- › Canopy-covered patient drop-off, ample parking adjacent to the building
- › Up to 3,489 RSF contiguous space

**JUAN VEGA, CCIM SIOR**  
Managing Director  
813 871 8516  
[juan.vega@colliers.com](mailto:juan.vega@colliers.com)

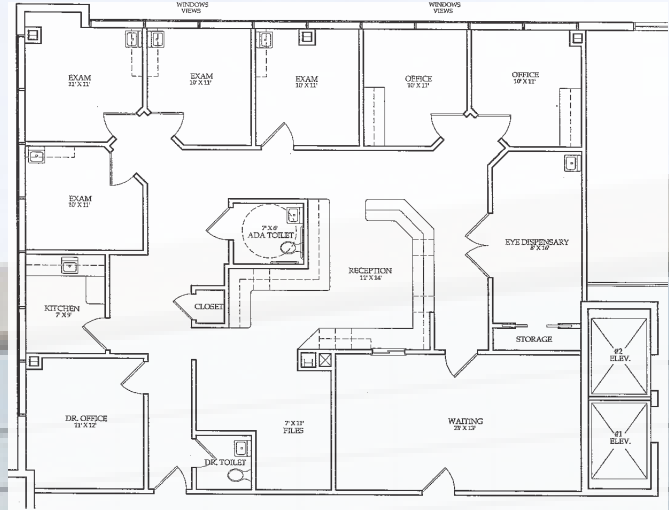


# AVAILABILITY

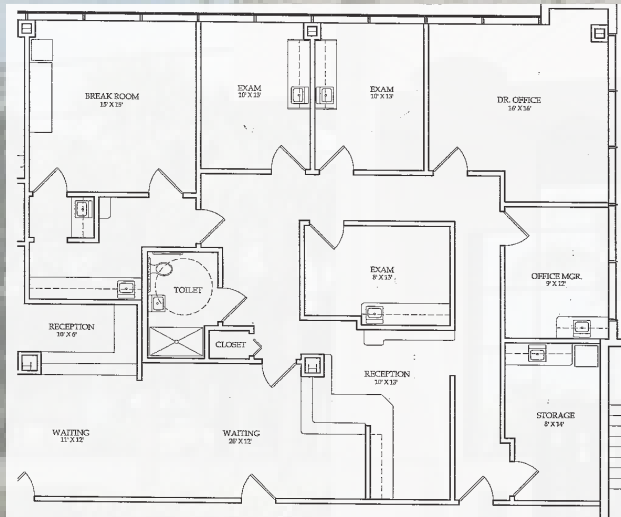
## Suite 100- 2,355 RSF



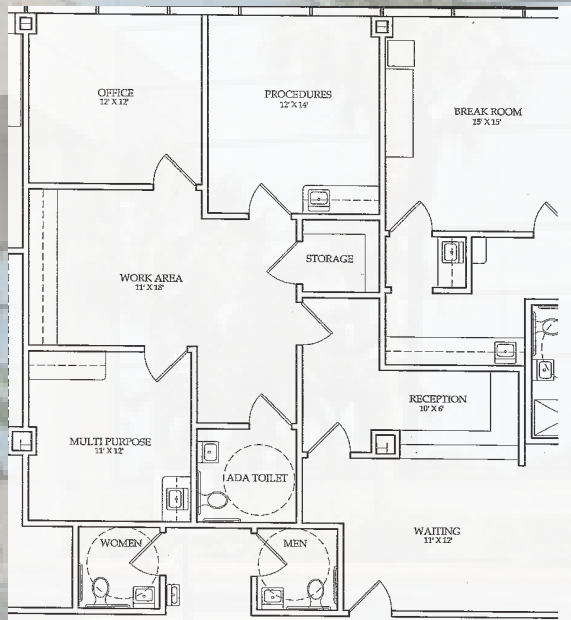
## Suite 200 - 2,515 RSF



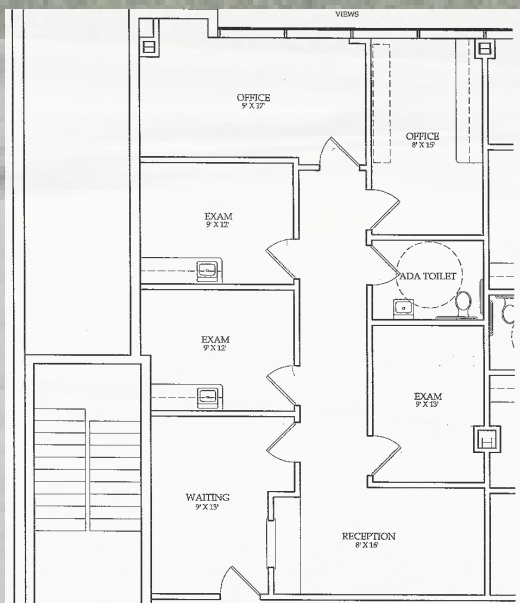
## Suite 220 - 2,249 RSF



## Suite 230 - 1,240 RSF

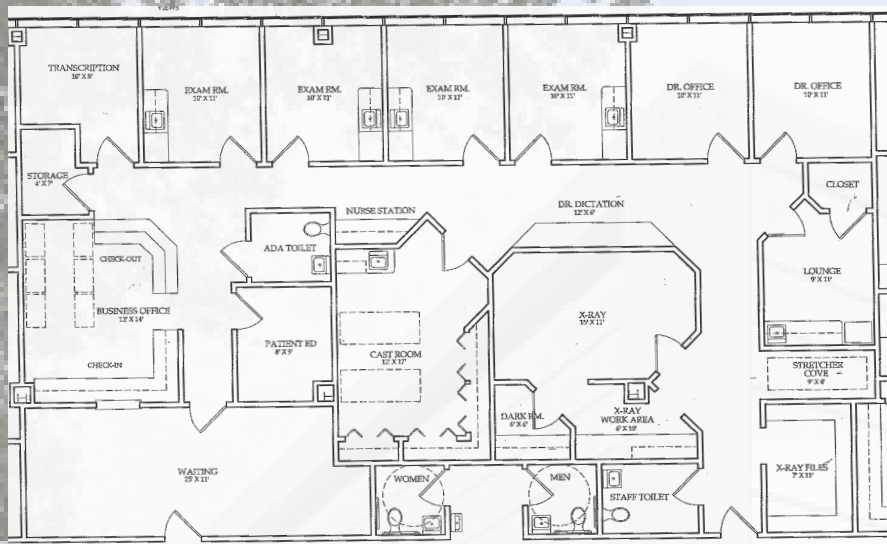


## Suite 290 - 1,211 RSF

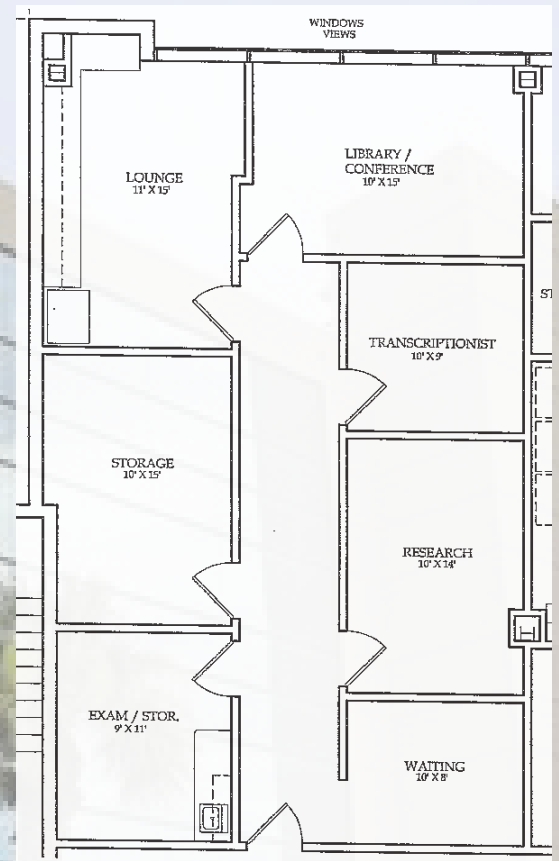


## AVAILABILITY

### Suite 350 - 3,182 RSF

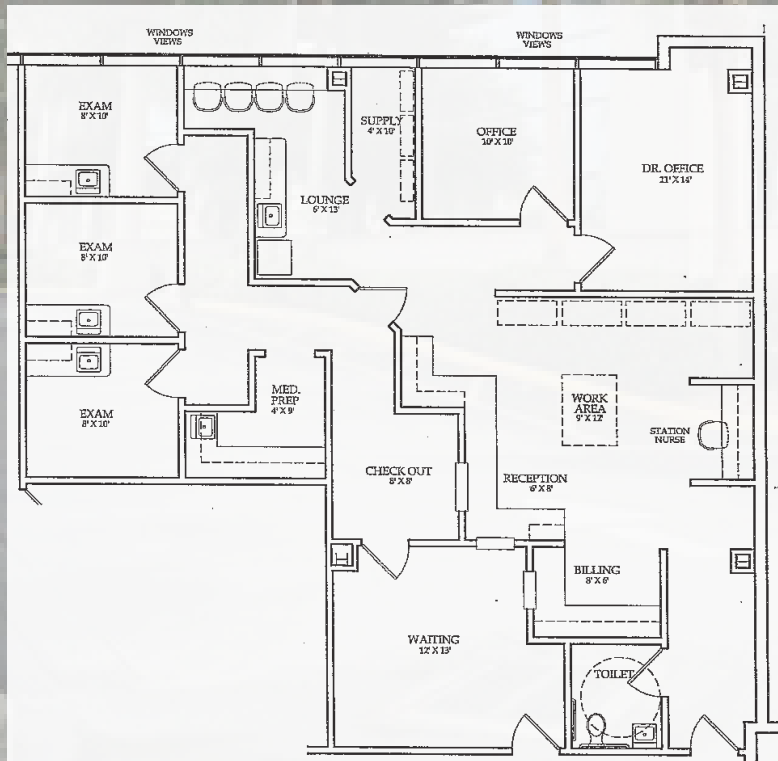


### Suite 370 - 1,211 RSF



## 4TH FLOOR AVAILABILITY

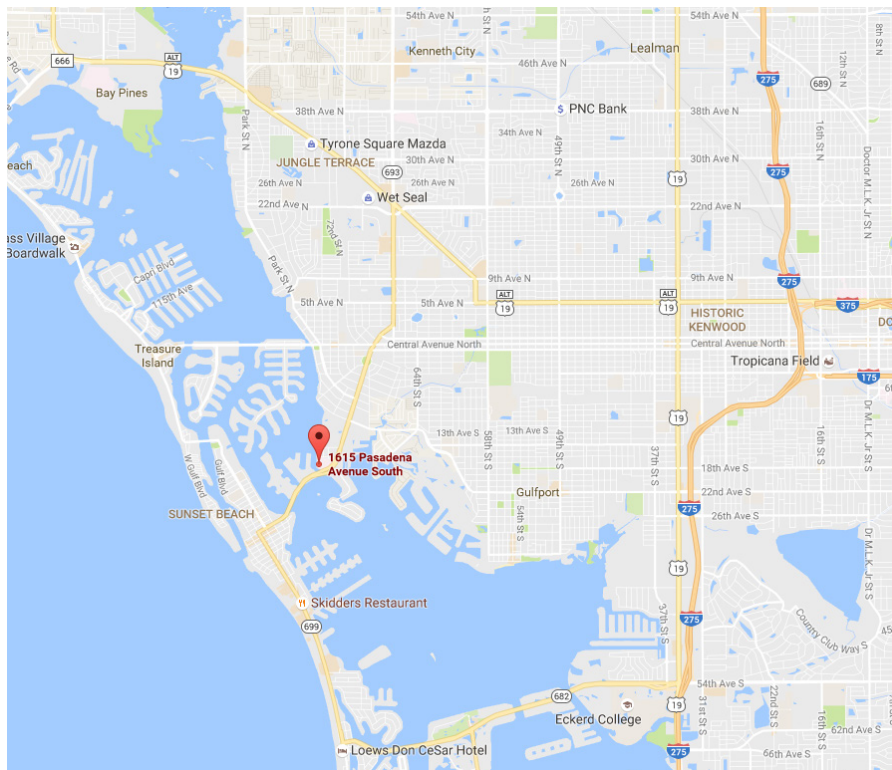
### Suite 480 - 1,870 RSF







## Location



## Contact Us

**JUAN VEGA, CCIM SIOR**  
 Managing Director  
 813 871 8516  
[juan.vega@colliers.com](mailto:juan.vega@colliers.com)

This document/email has been prepared by Colliers International for advertising and general information only. Colliers International makes no guarantees, representations or warranties of any kind, expressed or implied, regarding the information including, but not limited to, warranties of content, accuracy and reliability. Any interested party should undertake their own inquiries as to the accuracy of the information. Colliers International excludes unequivocally all inferred or implied terms, conditions and warranties arising out of this document and excludes all liability for loss and damages arising there from. This publication is the copyrighted property of Colliers International and/or its licensor(s). © 2016. All rights reserved. This communication is not intended to cause or induce breach of an existing listing agreement.



**COLLIERS INTERNATIONAL**  
 4830 West Kennedy Blvd.  
 Suite 300  
 Tampa, FL 33609  
[www.colliers.com](http://www.colliers.com)